

### Vitamins

Vitamin A, B-1 Thiamine, B-2 Riboflavin,  
B-3 Niacin, B-6 Pyridoxine, B-12, Vitamin C,  
Vitamin D, Vitamin E, Vitamin K, Biotin,  
Choline, Folic Acid, Inositol, Pantothenic Acid  
and Rutin.

### Minerals

Calcium, Phosphorus, Potassium, Sulfur,  
Sodium, Chlorine, Magnesium, Iron,  
Manganese, Copper, Iodine, Zinc, Silicon,  
Molybdenum, Boron, Titanium, Iron Chelate,  
Niacin, Selenium and Sodium.

### Enzymes

Amylase, Diastase, Saccharase, Pectase,  
Phosphatase, Catalase, Disphorase, Cozymase,  
Cytochrome systems, Lactic dehydrogenase,  
Succinic dehydrogenase, 24-Oxidoreductases,  
21-Transferases, 11-Lyases, 5-Isomerases,  
Pepsin and Trypsin.

### Amino Acids

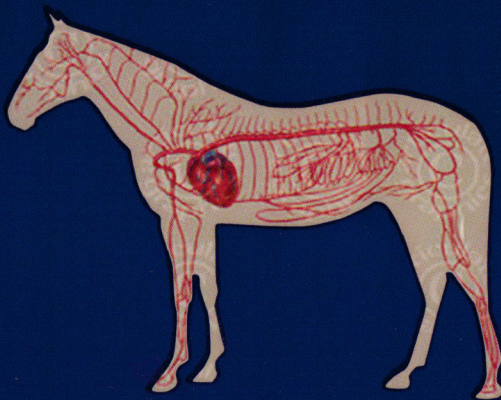
Alanine, Arginine, Aspartic Acid, Cystine,  
Glycine, Glutamic Acid, Histidine,  
Hydroxyproline, Isoleucine, Leucine, Lysine,  
Methionine, Phenylalanine, Proline, Serine,  
Threonine, Tryptophan, Tyrosine, and Valine.

### Other

Alpha-amino-butyric acid, Amines, Auxins,  
Brassins, Crocetin, Diglycerides, Flavonoids,  
Fructose, Glucose, Gibberellins, Guanine,  
Hexodecanal, Hypoxanthine, Kinins, Lecithin,  
Lycopene, Monoglycerides, Nucleic acids,  
Nuclein, Nucleosides, Phenolic acid, Pentosans,  
Terpenes, Triglycerides, Vernine and Xanthine  
Xanthophylls and Zeaxanthin.

# Nucell™

## Blood Builder



## 1 GALLON

## Blood Builder Iron Builder Oxygen Enhancer

**Ingredients:** Liver Fraction Peptides,  
Bee Propolis, Grape Pulp Concentrate  
and Orchic Substance

Inactive ingredients: Natural Strawberry corn syrup and  
water base with caramel color, xanthan gum, fd+c red 40  
and 1/10th of 1% sodium benzoate as a preservative.

**Recommended Dosage:**  
**1-2 oz. Daily**

**Shake well Before Using**

**Store in a cool dry place**



**WWW.BREEDERSGOLD.COM**  
**(732) 888-3880**

